

Testing for Uniformity of Line Segments

Yoshitomo Akimoto, Takenori Sakumura, and Toshinari Kamakura

Abstract—The directional tests consider the sample on $[0, 2\pi)$ although the angular data of line segments are on $[0, \pi)$. We will derive the LM test statistic for the conditional von Mises distribution for testing non-uniformity of angles of line segments spread on the two dimensional plane, which has relatively high performance even for small samples as the extension of V-test to half circle. Recently, the source of disasters should be investigated statistically for the view of anti-disaster. We illuminate the performance of this test statistic by conducting simulation studies and also apply to angular data of active faults in Japan. Finally, we proposed a new non-hierarchical clustering method based on angular dispersions.

Index Terms—angular data, Rayleigh test, LM test, von Mises distribution, k -means.

I. INTRODUCTION

IN Japan, there are so many earthquakes including smaller ones. On occasion of the 2011 Tohoku earthquake and the Great Hanshin earthquake, we had the great loss of human life in these disaster. The precise prediction of occurrence of the earthquakes has been expected for many years, however it is very difficult to include the estimations of locations and magnitudes. In the recent studies on seismology, active faults are useful for estimating locations and magnitudes of earthquakes. Active faults are the discontinuity of strata which has the distortion of each rock plane. The active faults may raise up the risk to bring about earthquakes.

The research on active faults and earthquakes has been studied for a long time. Especially the investigation into active faults and outbreak probabilistic model is also studied and discussed in Japan and other countries. We handle the active fault database collected by National Institute of Advanced Industrial Science and Technology[1]. The table I shows the specifications of the active faults in Japan. We should explore the property of active faults for the stand of anti-disaster from the statistical view-point.

In this article we investigate the distribution of active faults focusing on angles of faults devising the new test statistic with high performance even for small samples.

TABLE I
SPECIFICATIONS OF THE ACTIVE FAULTS IN JAPAN

Number of faults named	559
Number of the sum of elements by segment	3069
Total length [km]	10803

Manuscript received April 14, 2016. This work was supported by JSPS KAKENHI Grant Number 26240003.

Y. Akimoto is with Graduate School of Science and Engineering, Chuo University, 1-13-27 Kasuga, Bunkyo-ku, Tokyo 1128551, Japan. e-mail: sky.a68@gmail.com

T. Sakumura is with Department of Science and Engineering, Chuo University, 1-13-27 Kasuga, Bunkyo-ku, Tokyo 1128551, Japan. e-mail: sakumura@indsys.chuo-u.ac.jp

T. Kamakura is with Department of Science and Engineering, Chuo University, 1-13-27 Kasuga, Bunkyo-ku, Tokyo 1128551, Japan. e-mail: kamakura@indsys.chuo-u.ac.jp

II. TESTING FOR DIRECTIONAL UNIFORMITY

In the first place, we shall be aware of dangerousness of the active faults in the same directions, and we are interested in testing uniformity of the directions of faults against the uniform directions[2]. We study the uniformity test of angular data of line segments.

Mardia[3] described the Rayleigh test when mean direction is given based on von Mises distribution ([4], [5]), whose density function is expressed by the following:

$$f(\theta; \mu, \kappa) = \frac{1}{2\pi I_0(\kappa)} \exp(\kappa \cos(\theta - \mu)), \quad (1)$$

$$0 \leq \theta < 2\pi, 0 \leq \mu < 2\pi, \kappa \geq 0$$

where κ and μ describe the parameter of concentration and mean direction respectively. $I_0(\kappa)$ is the modified Bessel function of order zero,

$$I_0(\kappa) = \frac{1}{2\pi} \int_0^{2\pi} \exp(\kappa \cos x) dx. \quad (2)$$

The score statistic is obtained by using the convenient parameter transformation,

$$\omega = (\kappa \cos \mu, \kappa \sin \mu)^T. \quad (3)$$

Uniformity is corresponding to $\kappa = 0$, and the transformation gives rise to $\omega = \mathbf{0}$, which can give us very simple score statistic free from any evaluation of parameter estimation. The Rayleigh test statistic S_1 is follows: then the null distribution is asymptotically χ^2_2 .

$$S_1 = 2n\bar{R}^2, \quad (4)$$

where \bar{R} is the resultant vector of sample illustrated in appendix B. Another test is a just variant of the above test statistic, which is also known as Rayleigh test or V-test ([6], [7], [8], [9], [3], [10], [11], [12], [13], [14]):

$$S_2 = \frac{2}{n} \left\{ \sum_{i=1}^n \cos(\mu - \theta_i) \right\}^2. \quad (5)$$

The asymptotic distribution of S_2 under uniformity is χ^2_1 . The parameter μ included in the statistic S_2 is replaced by the specified direction θ_0 . In our study we replaced θ parameter by theoretical mean value of uniform distribution on $[0, 2\pi)$, and $E(\theta_i) = \pi$. In our experiences S_1 statistic does not have good performance in that it does not assure that α -critical levels and high powers against alternatives (small κ) especially for small samples. In this article we will propose the new test statistic based on the LM test and investigate the behavior of this statistic and apply this test to active faults data in Japan. The normal von Mises distribution is defined on $[0, 2\pi)$, although the angles of the line segments such active faults must be the distribution defined on $[0, \pi)$. We

consider the following conditional distribution,

$$g(\theta; \mu, \kappa) = \frac{f(\theta; \mu, \kappa)}{\int_0^\pi f(\theta; \mu, \kappa) d\theta} = \frac{\frac{1}{2\pi I_0(\kappa)} \exp(\kappa \cos(\theta - \mu))}{\int_0^\pi \frac{1}{2\pi I_0(\kappa)} \exp(\kappa \cos(\theta - \mu)) d\theta} \quad (6)$$

$$(0 \leq \theta, \mu < \pi, \kappa \geq 0)$$

Tedious calculations of the likelihood give us the following new test statistic:

$$S_3 = \frac{\left\{ -\frac{2n}{\pi} \sin \hat{\mu} + \sum_{i=1}^n \cos(\hat{\mu} - \theta_i) \right\}^2}{\frac{n}{2} - \frac{4n}{\pi^2} \sin^2 \hat{\mu}} \quad (7)$$

Here we note that the theoretical mean value $\pi/2$ is preferable for $\hat{\mu}$ to test uniformity on $[0, \pi)$. S_3 is distributed χ_1^2 asymptotically.



Fig. 1. The active faults in Japan

III. SMALL SAMPLE BEHAVIOR OF THE TEST STATISTICS

We study the small sample behavior of the test statistics based on the random segment spread on the two-dimensional space. The test statistic S_3 is basically restricted to the half angular space $[0, \pi)$. For comparison of these statistics we generate the uniform random numbers on $[0, \pi)$, and we use the $2\theta_i$ for S_1 and S_2 , θ_i for S_3 , because the former two statistics are ones designed for testing for the uniformity of $[0, 2\pi)$. In this article we need just test statistic defined on half circle $[0, \pi)$. The Table II and Table III are the results of the simulation for 1,000,000 times which show that our proposed statistics conditioned on the half circle based on the conditional distribution has moderately good performance.

We can say that the performance of the test statistics are as follows:

$$S_1 < S_3 \approx S_2. \quad (8)$$

However, as we conventionally use the test statistics S_1 and S_2 defined on full circle, and we must use the S_3 from the conditioned distribution.

TABLE II
THE NOMINAL AND THE ACTUAL LEVELS OF SIGNIFICANCE (RANDOM SAMPLE SIZE OF n FROM THE CONDITIONAL VON MISES DISTRIBUTION $\kappa = 0$)

n		1%	2.5%	5%	10%
3	proposed A	0.005	0.027	0.067	0.142
	proposed B	0.000	0.001	0.016	0.141
	proposed C	0.007	0.017	0.035	0.097
	Rayleigh test	0.000	0.000	0.001	0.106
	V-test	0.000	0.065	0.146	0.235
5	proposed A	0.015	0.035	0.067	0.128
	proposed B	0.001	0.014	0.061	0.156
	proposed C	0.007	0.020	0.046	0.100
	Rayleigh test	0.001	0.015	0.043	0.095
	V-test	0.022	0.054	0.097	0.168
10	proposed A	0.011	0.027	0.053	0.107
	proposed B	0.008	0.028	0.065	0.136
	proposed C	0.009	0.023	0.048	0.100
	Rayleigh test	0.007	0.021	0.046	0.098
	V-test	0.017	0.041	0.077	0.141
20	proposed A	0.009	0.023	0.048	0.100
	proposed B	0.011	0.030	0.062	0.125
	proposed C	0.009	0.024	0.049	0.099
	Rayleigh test	0.008	0.023	0.048	0.099
	V-test	0.014	0.034	0.065	0.123
50	proposed A	0.010	0.024	0.049	0.100
	proposed B	0.011	0.029	0.058	0.114
	proposed C	0.010	0.025	0.050	0.100
	Rayleigh test	0.010	0.024	0.050	0.100
	V-test	0.012	0.029	0.057	0.110
100	proposed A	0.010	0.025	0.050	0.099
	proposed B	0.011	0.027	0.054	0.107
	proposed C	0.010	0.025	0.050	0.100
	Rayleigh test	0.010	0.024	0.050	0.100
	V-test	0.011	0.027	0.053	0.105

^A S_3 (the width of sample range for $\hat{\mu}$).

^B S_3 (the sample mean for $\hat{\mu}$).

^C S_3 (the theoretical mean for $\hat{\mu}$).

IV. THE APPLICATION TO ACTIVE FAULTS DATA

As we mentioned in the previous section, the active faults in the same angle may be the source of earthquakes. We test the uniformity of angles of line segments approximating the faults by picking up both ends of observed faults. The Figure 2, Table IV and Table V show the $q = 1 - p$ -value calculated by prefecture of Japan. Thick color is corresponding to higher value of q . The high q -values indicates possibilities of non-uniformity of angles of faults.

A. generalized test

In addition, we consider that angular data exist only in the restricted range $[c_1, c_2)$. We derived the former conditional

TABLE III

 THE POWERS OF THE TEST (RANDOM SAMPLE SIZE OF n FROM THE CONDITIONAL VON MISES DISTRIBUTION $\kappa = 1$)

n		1%	2.5%	5%	10%
3	proposed A	0.008	0.123	0.234	0.365
	proposed B	0.000	0.004	0.053	0.277
	proposed C	0.012	0.029	0.054	0.114
	Rayleigh test	0.000	0.000	0.001	0.194
	V-test	0.000	0.134	0.272	0.396
5	proposed A	0.144	0.244	0.338	0.451
	proposed B	0.008	0.069	0.208	0.381
	proposed C	0.015	0.034	0.065	0.123
	Rayleigh test	0.007	0.067	0.146	0.256
	V-test	0.096	0.188	0.273	0.374
10	proposed A	0.248	0.343	0.432	0.537
	proposed B	0.113	0.233	0.353	0.495
	proposed C	0.021	0.045	0.079	0.141
	Rayleigh test	0.100	0.195	0.302	0.442
	V-test	0.168	0.268	0.362	0.473
20	proposed A	0.305	0.400	0.488	0.591
	proposed B	0.310	0.453	0.571	0.689
	proposed C	0.032	0.063	0.106	0.177
	Rayleigh test	0.325	0.470	0.594	0.720
	V-test	0.312	0.425	0.523	0.628
50	proposed A	0.343	0.446	0.539	0.644
	proposed B	0.738	0.831	0.888	0.933
	proposed C	0.067	0.121	0.185	0.280
	Rayleigh test	0.858	0.923	0.957	0.980
	V-test	0.651	0.748	0.816	0.877
100	proposed A	0.400	0.515	0.613	0.716
	proposed B	0.966	0.983	0.991	0.996
	proposed C	0.141	0.227	0.319	0.436
	Rayleigh test	0.997	0.999	1.000	1.000
	V-test	0.914	0.950	0.970	0.983

^A S_3 (the width of sample range for $\hat{\mu}$).

^B S_3 (the sample mean for $\hat{\mu}$).

^C S_3 (the theoretical mean for $\hat{\mu}$).


Fig. 2. The non-uniformity of the active faults in Japan

distribution function in (9).

$$\begin{aligned}
 h(\theta; \mu, \kappa) &= \frac{2f(2\theta; \mu, \kappa)}{2 \int_{c_1}^{c_2} f(2\theta; \mu, \kappa) d\theta} \\
 &= \frac{\frac{1}{\pi I_0(\kappa)} \exp(\kappa \cos(2\theta_i - 2\mu))}{\int_{c_1}^{c_2} \frac{1}{\pi I_0(\kappa)} \exp(\kappa \cos(2\theta - 2\mu)) d\theta} \quad (9) \\
 &\quad (c_1 \leq \theta, \mu < c_2, \kappa \geq 0)
 \end{aligned}$$

TABLE IV

 THE PREFECTURES OF LARGER q -VALUE

Prefecture	q -value
Toyama	0.956
Osaka	0.836
Yamanashi	0.455
Fukuoka	0.359
Tokyo	0.351

TABLE V

 THE PREFECTURES OF SMALLER q -VALUE

Prefecture	q -value
Hokkaido	<2e-16
Yamagata	<2e-16
Akita	<2e-16
Oita	<2e-16
Nagasaki	<2e-16

 Therefore, we get LM test statistic LM' is (10).

$$\begin{aligned}
 LM' &= \\
 &= \frac{8 \left\{ \sum_{i=1}^n \cos(2\mu - 2\theta_i) + \frac{n[\sin(2\mu - 2c_1) - \sin(2\mu - 2c_2)]}{2(c_1 - c_2)} \right\}^2}{n \left\{ 4 - \frac{2[\sin(2\mu - 2c_1) - \sin(2\mu - 2c_2)]^2}{(c_1 - c_2)^2} + \frac{\sin[2(2\mu - 2c_2)] - \sin[2(2\mu - 2c_1)]}{c_1 - c_2} \right\}} \quad (10)
 \end{aligned}$$

V. CLUSTERING

In this section, we consider the problem on clustering line segments based on the angular data. Here we note that the angular data are observed just in $[0, \pi)$, that is we cannot obtain the angles of the segments. Then, we must classify these data using the restricted method based on k -means to a half circle. We propose the following method considering the measure of angular distance θ and α .

$$\arg \min_{\alpha_1, \alpha_2, \dots, \alpha_K} \sum_{i=1}^n \min_j [1 - \cos(2\theta_i - 2\alpha_j)] \quad (11)$$

Algorithm 1 angular data clustering

Input:
 K (number of clusters)

 $\Theta = \{\theta_1, \theta_2, \dots, \theta_n\}$ (angular data of line segment)

Output:
 $A = \{\alpha_1, \alpha_2, \dots, \alpha_K\}$
 $l(i) | i = 1, \dots, n$ (cluster labels of θ_i)

 $A \leftarrow$ choose K α_j 's from angular data sample Θ as the nodes randomly

repeat
 $A_{previous} \leftarrow A$
for $i = 1$ to n **do**
 $l(i) \leftarrow \arg \min_j [1 - \cos(2\theta_i - 2\alpha_j)]$
end for
for $j = 1$ to k **do**
 $A \leftarrow \text{mean.direction}(\{\theta_i\} | l(i) = j)$ from (13)

end for
until $A_{previous} \neq A$

For comparing our proposed method and general k -means, we plotted the histogram of angular data colored by the

clusters. As illustration, look at the lineament data appeared the circular test book [15]. Our proposed method can handle the connectivity of the 0 and π in the case of the angles of line segments data. Here we note that usual circular data have property the connection of 0 and 2π . Then the histogram Figure 3 is seemed to be separated dark colored one cluster considering the $0-\pi$ connectivity. However the standard k -means method results in detecting unusual two clusters owing to disconnection of 0 and π (see Figure 4).

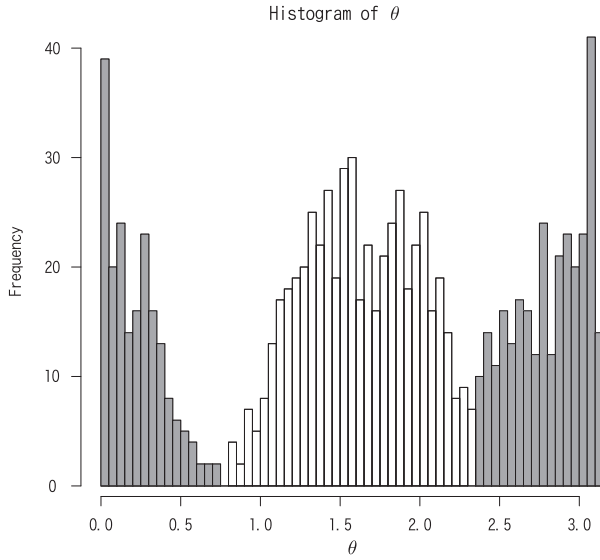


Fig. 3. The result of clustering Fisher's lineament data (proposed method)

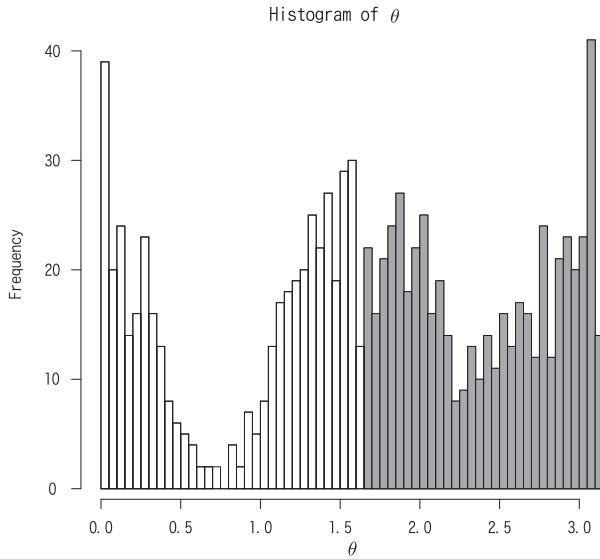


Fig. 4. The result of clustering Fisher's lineament data (normal k -means)

Figure 5 shows the result of clustering Japanese active faults with the number of clusters $k = 2$. Then we had the LM' test the each clustered data and the p -values are 0.00075, 0.00015.

VI. CONCLUSION AND FUTURE

The purpose of this article was to derive the test statistic of angular data of line segments for describing the property of data. Then we proposed the LM test statistic.

The LM test statistic for the conditional von Mises distribution which has relatively high performance even for small samples as the extension of V-test to half circle, and the proposed test statistics are mostly assure.

Our proposed method could find the areas of non-uniformity of angles of active faults. We are expected to pursue the exact null distribution of LM test statistic. We also proposed the new method of clustering technique for angular data in limited interval $[0, \pi)$. The clustering algorithm can solve the problems of connectivity of 0 and π . Further investigations will be needed considering locations and length of the line segments.

APPENDIX A

DERIVATION OF LM TEST STATISTIC

Likelihood function and Log likelihood function of the conditional von Mises distribution (6) is

$$L(\theta_i; \mu, \kappa) = \prod_{i=1}^n f(\theta_i; \mu, \kappa),$$

$$l = \sum_{i=1}^n \log f(\theta_i; \mu, \kappa)$$

$$= \sum_{i=1}^n [\kappa \cos(\theta_i - \mu) - \log I_0(\kappa) - \log(2\pi) - \log Z(\mu, \kappa)],$$

where I_0 denotes the modified Bessel function of the first kind and order 0, and $Z(\mu, \kappa)$ can be defined by

$$Z(\mu, \kappa) = \int_0^\pi \frac{1}{2\pi I_0(\kappa)} \exp(\kappa \cos(\theta - \mu)) d\theta.$$

The score statistic with $\kappa = 0$ is calculated using first and second derivatives. Then, $Z(\mu, 0) = 1/2$. Take partial differentiation of $Z(\mu, 0)$ with respect to each parameters μ and κ .

$$\frac{\partial Z(\mu, 0)}{\partial \mu} = 0.$$

$$\frac{\partial Z(\mu, 0)}{\partial \kappa} = \int_0^\pi \left[\frac{1}{2\pi} \cos(\theta - \mu) \right] d\theta.$$

$$\frac{\partial^2 Z(\mu, 0)}{\partial \mu^2} = 0.$$

$$\frac{\partial^2 Z(\mu, 0)}{\partial \mu \partial \kappa} = \int_0^\pi \left[\frac{1}{2\pi} \cdot \sin(\theta - \mu) \right] d\theta.$$

$$\frac{\partial^2 Z(\mu, 0)}{\partial \kappa^2} = \int_0^\pi \left[\frac{1}{4\pi} + \frac{1}{2\pi} (\cos(\theta - \mu))^2 \right] d\theta.$$

Thus, substitute each partial differentiation for this result where $A(\kappa) = I_1(\kappa)/I_0(\kappa)$.

$$\frac{\partial l}{\partial \mu} = \sum_{i=1}^n \left[0 \cdot \sin(\theta_i - \mu) - \frac{1}{Z(\mu, 0)} \frac{\partial Z(\mu, 0)}{\partial \mu} \right]$$

$$= 0.$$

$$\frac{\partial l}{\partial \kappa} = \sum_{i=1}^n \left[\cos(\theta_i - \mu) - A(0) - \frac{1}{Z(\mu, 0)} \frac{\partial Z(\mu, 0)}{\partial \kappa} \right]$$

$$= \sum_{i=1}^n [\cos(\theta_i - \mu)] - \frac{2n}{\pi} \sin(\mu).$$

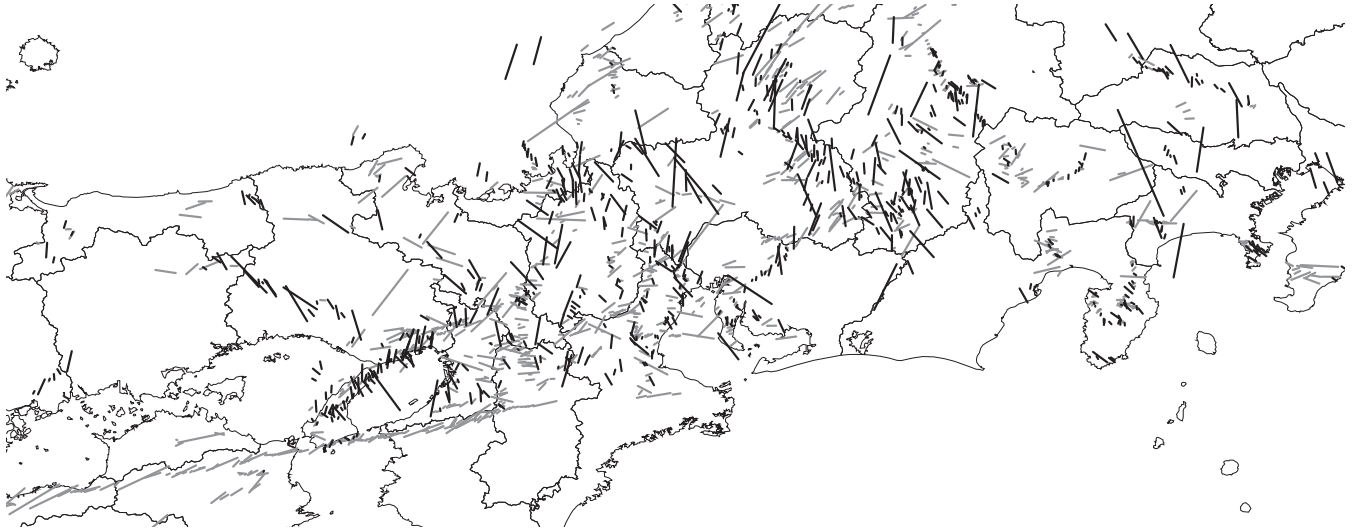


Fig. 5. The result of clustering Japan active faults

$$\begin{aligned} \frac{\partial^2 l}{\partial \mu^2} &= \sum_{i=1}^n \left[-0 \cdot \cos(\theta_i - \mu) \right. \\ &\quad \left. - \left(\frac{-1}{Z^2(\mu, 0)} \left(\frac{\partial Z(\mu, 0)}{\partial \mu} \right)^2 \right. \right. \\ &\quad \left. \left. + \frac{1}{Z(\mu, 0)} \frac{\partial^2 Z(\mu, 0)}{\partial \mu^2} \right) \right] \\ &= 0. \end{aligned}$$

$$S_3 = \frac{\left\{ -\frac{2n}{\pi} \sin \hat{\mu} + \sum_{i=1}^n \cos(\hat{\mu} - \theta_i) \right\}^2}{\frac{n}{2} - \frac{4n}{\pi^2} \sin^2 \hat{\mu}}. \quad (12)$$

APPENDIX B DIRECTIONAL STATISTICS

In directional statistics, we cannot calculate arithmetic mean, then the mean direction $\bar{\theta}$ is often used [10]. the mean direction is angle of resultant vector of observations. description of this in complex plane is (13),

$$\bar{\theta} = \arg \left\{ \sum_{j=0}^n \cos \theta_j + i \sum_{j=0}^n \sin \theta_j \right\}. \quad (13)$$

Also, \bar{R} that is the length of resultant vector \mathbf{R} is used for a measure of concentration of a data set.

$$\begin{aligned} \frac{\partial^2 l}{\partial \kappa^2} &= \sum_{i=1}^n \left[-A'(0) - \left(\frac{-1}{Z^2(\mu, 0)} \left(\frac{\partial Z(\mu, 0)}{\partial \kappa} \right)^2 \right. \right. \\ &\quad \left. \left. + \frac{1}{Z(\mu, 0)} \frac{\partial^2 Z(\mu, 0)}{\partial \kappa^2} \right) \right] \\ &= \frac{4n}{\pi^2} \sin^2(\mu) - \frac{n}{2}. \end{aligned}$$

Finally, calculate the score statistic by Lagrange multiplier using Hessian matrix. we call this statistic LM test statistic.

$$H = \begin{bmatrix} H_{11} & H_{12} \\ H_{21} & H_{22} \end{bmatrix} = - \begin{bmatrix} \frac{\partial^2 l}{\partial \mu^2} & \frac{\partial^2 l}{\partial \mu \partial \kappa} \\ \frac{\partial^2 l}{\partial \mu \partial \kappa} & \frac{\partial^2 l}{\partial \kappa^2} \end{bmatrix}.$$

$$J = \begin{bmatrix} d_1 & d_2 \end{bmatrix} = \begin{bmatrix} \frac{\partial l}{\partial \mu} & \frac{\partial l}{\partial \kappa} \end{bmatrix}.$$

$$LM = d_2^T (H_{22} - H_{12}^T H_{11}^{-1} H_{21})^{-1} d_2.$$

$$\mathbf{R} = \left(\sum_{i=1}^n \cos \theta_i, \sum_{i=1}^n \sin \theta_i \right). \quad (14)$$

$$\bar{R} = \frac{\|\mathbf{R}\|}{n}. \quad (15)$$

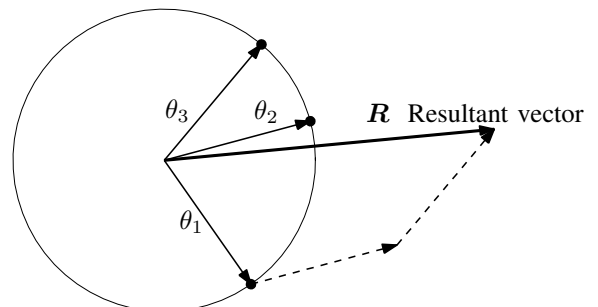


Fig. 6. The resultant vector which indicated the mean direction

REFERENCES

- [1] G. S. of Japan of National Institute of Advanced Industrial Science and T. (AIST), "Active fault database of Japan," https://gbank.gsj.jp/activefault/index_e_gmap.html.
- [2] Y. Akimoto, T. Sakumura, and T. Kamakura, "Directional data analysis for line segments," *Lecture Notes in Engineering and Computer Science: Proceedings of the World Congress on Engineering and Computer Science 2015, WCECS 2015, 21-23 October, 2015, San Francisco, USA*, pp. 770–775.
- [3] K. Mardia, *Statistics of Directional Data*, ser. Probability and Mathematical Statistics a Series of Monographs and Textbooks. Academic Press, 1972.
- [4] S. Jammalamadaka and A. Sengupta, *Topics in Circular Statistics*, ser. Series on multivariate analysis. World Scientific, 2001.
- [5] R. Von Mises, "Über die "ganzzahligkeit" der atomgewichte und verwandte fragen," *Phys. z.*, vol. 19, pp. 490–500, 1918.
- [6] E. Batschelet, *Circular Statistics in Biology*, ser. Mathematics in biology. Academic Press, 1981.
- [7] J. Davis, *Statistics and Data Analysis in Geology*. Wiley, 2002.
- [8] D. Durand and J. A. Greenwood, "Random unit vectors ii: Usefulness of gram-charlier and related series in approximating distributions," *The Annals of Mathematical Statistics*, vol. 28, no. 4, pp. pp. 978–986, 1957.
- [9] J. A. Greenwood and D. Durand, "The distribution of length and components of the sum of n random unit vectors," *Ann. Math. Statist.*, vol. 26, no. 2, pp. 233–246, 06 1955.
- [10] K. Mardia and P. Jupp, *Directional Statistics*, ser. Wiley Series in Probability and Statistics. Wiley, 2000.
- [11] L. R. F.R.S., "Xii. on the resultant of a large number of vibrations of the same pitch and of arbitrary phase," *Philosophical Magazine Series 5*, vol. 10, no. 60, pp. 73–78, 1880.
- [12] L. R. O. F.R.S., "Xxxi. on the problem of random vibrations, and of random flights in one, two, or three dimensions," *Philosophical Magazine Series 6*, vol. 37, no. 220, pp. 321–347, 1919.
- [13] M. A. Stephens, "Tests for randomness of directions against two circular alternatives," *Journal of the American Statistical Association*, vol. 64, no. 325, pp. 280–289, 1969.
- [14] S. M. Swan, A. R. H., "Introduction to geological data analysis," *International Journal of Rock Mechanics and Mining Sciences and Geomechanics Abstracts*, vol. 32, no. 8, p. 387A, 1995.
- [15] N. Fisher, *Statistical Analysis of Circular Data*, ser. Statistical Analysis of Circular Data. Cambridge University Press, 1995.