

Microcontroller Based Automated Water Level Sensing and Controlling: Design and Implementation Issue

S. M. Khaled Reza, Shah Ahsanuzzaman Md. Tariq, S.M. Mohsin Reza

Abstract—In this paper we introduce the notion of water level monitoring and management within the context of electrical conductivity of the water. More specifically, we investigate the microcontroller based water level sensing and controlling in a wired and wireless environment. Water Level management approach would help in reducing the home power consumption and as well as water overflow. Furthermore, it can indicate the amount of water in the tank that can support Global Water types including cellular dataloggers, satellite data transmission systems for remote water monitoring system. Moreover, cellular phones with relative high computation power and high quality graphical user interface became available recently. From the users perspective it is required to reuse such valuable resource in a mobile application. Finally, we proposed a web and cellular based monitoring service protocol would determine and senses water level globally.

Index Terms—Conductivity, indicator, microchip, nozzle, and water level sensor.

I. INTRODUCTION

Sustainability of available water resource in many reason of the word is now a dominant issue. This problem is quietly related to poor water allocation, inefficient use, and lack of adequate and integrated water management. Water is commonly used for agriculture, industry, and domestic consumption. Therefore, efficient use and water monitoring are potential constraint for home or office water management system. Last few decades several monitoring system integrated with water level detection have become accepted. Measuring water level is an essential task for government and residence perspective. In this way, it would be possible to track the actual implementation of such initiatives with integration of various controlling activities. Therefore, water controlling system implementation makes potential significance in home applications. The existing automated method of level detection is described and that can be used to

Manuscript received July 26, 2010.

S.M. Khaled Reza is with the International Master Programs in Computational Engineering (Distributed Systems Engineering), Department of Computer Science, Dresden University of Technology, Nötnitzer Straße 46, D-01187 Dresden, GERMANY (phone: +4917687240068; e-mail: khalednub@yahoo.com).

A. S. M. Tariq was with the University of Trento, ITALY. He is now with the Department of Electrical Engineering, University of Applied Sciences Dresden, Friedrich-List-Platz 1, D-01069 Dresden, GERMANY (e-mail: ahsanuzzaman.tariq@gmail.com).

S.M. Mohsin Reza is with the International Masters Program in Computational Engineering (Distributed Systems Engineering), Department of Computer Science, Dresden University of Technology, Nötnitzer Straße 46, D-01187 Dresden, GERMANY (e-mail: smmohsin.reza@gmail.com).

make a device on/off. Moreover, the common method of level control for home appliance is simply to start the feed pump at a low level and allow it to run until a higher water level is reached in the water tank. This is not properly supported for adequate controlling system. Besides this, liquid level control systems are widely used for monitoring of liquid levels, reservoirs, silos, and dams etc. Usually, this kind of systems provides visual multi level as well as continuous level indication. Audio visual alarms at desired levels and automatic control of pumps based on user's requirements can be included in this management system. Proper monitoring is needed to ensure water sustainability is actually being reached, with disbursement linked to sensing and automation. Such programmatic approach entails microcontroller based automated water level sensing and controlling.

This paper is organized in the following ways. Chapter two concentrated with the basic concepts of the system design. In chapter three we described the concrete idea of PIC16F84A. Design and Implementation part is described in chapter four. Chapter five describes about our proposed monitoring and controlling network. Chapter six deals with the conclusion and future works.

II. BASIC CONCEPTS

The technique of water level monitoring and controlling system concentrated with some basic parts which are softly aggregated together in our proposed method. Basic descriptions of some parts are described below.

A. Water Level Indicator

For water level indication unit we can use some LED light which will work for water level indication. By touching different water levels through water level sensor, LED should be indicated as on/off (i.e. on: yes sensor senses water).

B. Water Level Sensor

To make special water level sensor we would like to introduce some convenient materials such as Iron rod, nozzles, resistance, rubber etc. A connecting rod made by iron and steel which should be connected with ground and we need at least four nozzles which should be connected with +5v via a 1k Ω resistance. We need to bind them together and put a rubber at their joint point which will act as an insulator for every nozzle. When the sensor touches water, nozzles and connecting rod get electric connection using water conductivity [3].

C. Water Pump Controlling System

We can control the water pump by connecting it with an output pin of microcontroller via a motor driver circuit. When microcontroller sends a positive signal (+5v) or a ground signal (0v) to the motor driver circuit, then the water pump become on or off respectively. We also would like to use a manual switch on the motor driver circuit which is supposed to use for controlling it manually. It makes this system more users friendly.

D. Microcontroller

Microcontroller is a computer on a chip that is programmed to perform almost any control, sequencing, monitoring and display the function. Because of its relatively low cost, it becomes the natural choice to the designer. Microcontroller is designed to be all of that in one. Its great advantage is no other external components are needed for its application because all necessary peripherals are already built into it. Thus, we can save the time, space and cost which is needed to construct low cost devices [1].

E. Others

To control some high power devices such as lights, heaters, solenoids and motor with a microcontroller we need interface devices between the microcontroller pins and the high power devices. Mechanical relays sometimes called contactors are available to switch currents from milliampere to several thousands of amperes. In this system we should use a relay circuit with the water pump to adapt with high voltage ac current. The output of relay circuit should be connected with motor's negative side of the cable. The positive side of the cable should be connected with 220v ac current. So, we can use electromagnetic relay as an electrical amplifier.

III. PIC 16F84A MICROCONTROLLER

PIC is a family of RISC microcontrollers made by Microchip Technology which is derived from the PIC1650 that is originally developed by General Instrument's Microelectronics Division. PIC is the integrated circuit which was usually developed to control peripheral devices and alleviating the load from the main CPU. Compared to a human being, the brain is the main CPU and the PIC is equivalent to the autonomic nervous system. Therefore, we propose a low cost 8-bit PIC 16F84A microcontroller as a central controller of our system [1].

A. PIC 16F84A Block Description

The PIC 16F84A belongs to the mid-range family of the PICmicro® microcontroller devices. The program memory contains 1K words, which translates to 1024 instructions, since each 14-bit program memory word is the same width as each device instruction. The data memory (RAM) contains 68 bytes [1]. Data EEPROM is 64 bytes. There are also 13 I/O pins that are user-configured on a pin-to-pin basis. Some pins are multiplexed with other device functions.

B. Memory Organization

There are two memory blocks available in the PIC 16F84A which are program memory and data memory [14]. Flash

memory is used to store the program. The size of program memory is 1024 locations with 14 bits width. Flash memory can be rewritten large amount of times for updating purpose. Even if power is switched off the contents of the flash memory will not be lost because of having EEPROM. Data registers are generally used to keep numeric values such as integer and floating-point values. It can work as accumulator of the memory. Data memory has been partitioned into general purpose registers and special purpose registers which are used to store data address etc. and hold programs state respectively.

IV. DESIGN AND IMPLEMENTATION

For experiment this design we have been using an 8 bit microcontroller, an inverter, a reserve tank (res. tank), water tank and water pump. Water pump has been controlled using water level sensor. Four homemade water level sensors are used to detect the water level. Inverted sensor data used to pass as the input of microcontroller [6]. We used MPLAB programming software to write into PIC 16F84A memory [1].

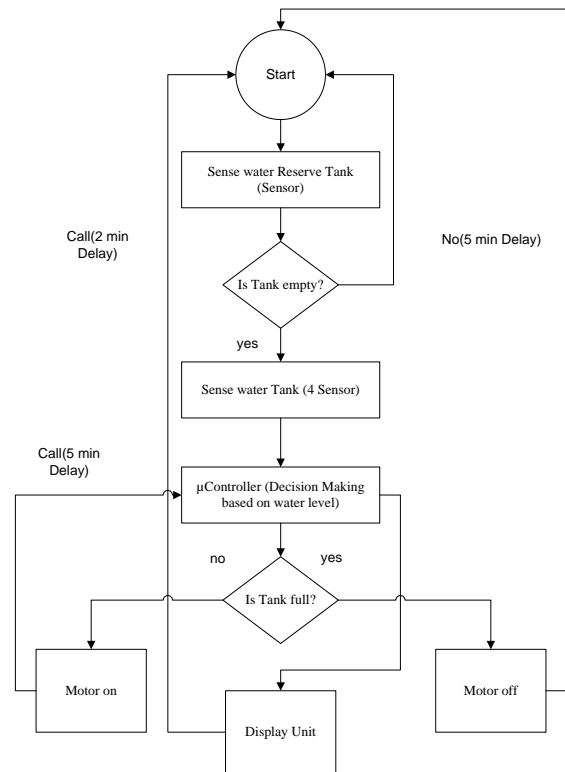


Figure 1: Flow chart of system design

A. System Architecture

At the first stage of design a water level sensor is been made for sensing water level accurately. Microcontroller is used to control the overall system automatically that reduces the design and control complexity. Microcontroller takes input from the sensor unit which senses the water level through inverter. After processing input variables, resultant output decides the water pump's action (on/off) with respect to current water status of the tank. The whole design flow chart is shown in Fig. 1.

B. Sensor Unit

Water level sensor unit consist two parts, one sensor is used in reserve tank and other four sensors placed inside water tanks. Moreover, sensors are composed with rod, nozzles, inducting rubber etc. Rod is made by iron and steel, that is connected with ground. Nozzles are connected with +5v. Iron rod and nozzles are binding together via a rubber. Rubber is used to make the electrical connection of iron rod and nozzles separate. Due to water conductivity 22kΩ resistance has been used. The basic operation is, when one nozzle of the sensor is drawn into water, nozzle and rod becomes connected due to water conductivity. Then nozzle gets ground signal (0v) which is connected with input of the inverter. The output of inverter is connected as the input of microcontroller which makes LEDs on/off, acts as user display unit shown in Fig. 2.

C. Control Unit

The basic operation of control unit is the controlling water pump by microcontroller which is defined by particular program. Water pump is connected with an output pin of microcontroller via a relay circuit which is connected with a transistor. The collector of this transistor is connected with the relay circuit and the emitter is grounded. In the relay circuit, one diode is used for sending signal in one direction and one inductor is to opposing the change of current flow respectively. The output of relay circuit is connected with motor pump's cable as a negative. The other side of motor's cable is connected with AC 220V as positive voltage.

Control unit performs following actions:

- 1) *Off operation:* When the microcontroller sends 0 volt to the base of the transistor then it becomes off and its emitter and collector becomes open. Then no ground signal (0v) is collected in the relay circuit. So, the negative side in the cable of motor pumps getting positive signal (+5v). Therefore, the motor pump will be OFF due to getting positive signal (+5v) at one side and 220v ac at the other end.
- 2) *On operation:* Transistor becomes on when the microcontroller sends positive signal (+5v) and its emitter and collector become short. Relay circuit and motor pump will get ground signal (0v) and for this reason the motor pump will be ON due to getting ground at negative side and 220v ac to the other side.

In addition, the current is changed up to positive signal (+5v) to ground or its reverse then the inductor can tolerate some resistance. For this reason we should use a diode. An on/off switch is used to control the motor driver circuit manually. Control unit's diagram shown in Fig. 2 with PIC16F84A microcontroller.

D. Operation Description and Complete Circuit Diagram

To implement the system we should use some necessary parts such as PIC 16F84A microcontroller, Crystal Oscillator, 2 capacitor having capacitance 22 pF and 27 pF, inverter, LED, water tank, water level sensor, water pump, transistor, inductor and some capacitor. The graphical Figure of the whole circuit diagram is shown in Fig. 2. RA4 pin of the microcontroller is used to detect the existence of water in the reserve tank. If no water available there, it sends a signal that

controls the whole circuit and switch it OFF for a certain amount of time. And when the timer becomes on it senses the reserve tank again. RA0, RA1, RA2 and RA3 pins are used to get inverted output from the water source. Pin 15 and 16 of microcontroller are connected with a Crystal Oscillator. The other side of crystal oscillator is connected with the ground via two capacitors having 22 pF and 27 pF respectively which performs as an external clock generator to execute the instructions of the program.

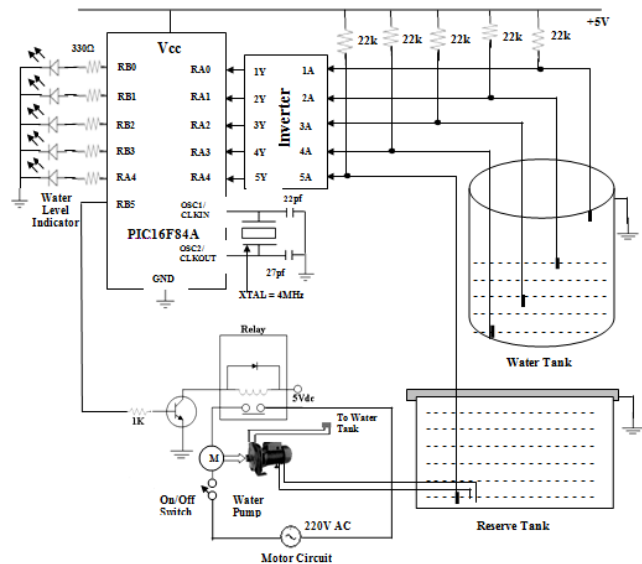


Figure 2: Complete circuit diagram

If four pins RA0, RA1, RA2 and RA3 gets ground signal (0v) that means there is no water in the water tank. So, all LEDs should be off. We can also set this issue more intelligent way, if pin RA3 senses ground signal then we can be sure that there is no water in the tank. And if we found pin no RA0 senses positive signal (+5v) then we can tell that water tank is full of water. So, when water tank is empty then water pump should becomes on and all LED light becomes off. If pin no RA3 gets positive signal (+5v) and other three gets ground signal (0v) that means water tank has 1/4th water. For this reason water pump remains on and the first LED should be on now; other three LEDs are still remaining off. If the four pins RA0, RA1, RA2 and RA3 get positive signal (+5v) that means water tank is now full of water. For this reason the water pump should be off now and all the LEDs should be on. Notice that we used these LEDs for visual and user's home monitoring.

When the water is decreasing from the tank by home use, the display LED should start to become OFF one after another from the top to bottom. If all the LEDs becomes OFF that means the tank becomes empty again and the water pump should becomes automatically ON again exactly after the last LED becomes OFF. These operations should automatically perform as a cycle. The corresponding experimental result is presented here (see Table I).

E. Programming Description

The program we used to control the entire process is written in PIC16F84A microcontroller's assembly language. All the codes have been tested and simulated using MPLAB

TABLE I
EXPERIMENTAL RESULT OF WATER LEVEL SENSING UNIT, MOTOR AND
VISIBLE LEVEL DESCRIPTION FOR USER BY LED LIGHT

Inverted Input From Water Sensor		Output						
Res. Tank	Water Tank	LED 1	LED 2	LED 3	LED 4	Motor	Tank	Reserve Tank
0	0000	OFF	OFF	OFF	OFF	OFF	Empty	Empty
1	0000	ON	OFF	OFF	OFF	ON	Empty	Water Exist
1	1000	ON	ON	OFF	OFF	NO OP.	1/4	Water Exist
1	1100	ON	ON	ON	OFF	NO OP.	2/4	Water Exist
1	1110	ON	ON	ON	ON	NO OP.	3/4	Water Exist
1	1111	ON	ON	ON	ON	ON	Full	Water Exist

software which is provided by MICROCHIP [1]. The external timer we have used in our system is a Crystal Oscillator (XTAL) 4MHZ. When the system powered up, microcontroller took the input from the water sensor through the inverter. Inverted inputs from RA0, RA1, RA2 and RA3 of microcontroller are loaded by register and its combination is being checked. The combination checking was done in the following way.

- 1) When microcontroller gets the first pin signal then it loads the signal to its register. After that it checks the next pin signal and then loads it to its register. Other pin signals operation also done respectively in the same way. Finally it loads all (four) required pin's signal to the register. By using these four signal combinations it decides an output and sends that signal to the output pin.
- 2) The whole operation makes a cycle or repeats itself with respect to the input signals.

V. PROPOSED WATER LEVEL MONITORING NETWORK

Water, one of the great natural resources should be utilized in proper form. But a huge amount of water is being wasted during daily life due to lack of control. Our proposed system guarantees to accumulate a good amount of usable water every day. This monitoring and controlling system uses daily life device like laptop or mobile phone. Due to the fact of controlling remotely we introduced a useful wireless automated controlling system. This proposed web based monitoring and controlling network can work with the existing water controlling system successfully as described graphically in Fig. 3. We would like to partition this whole proposed wireless network in the following manner.

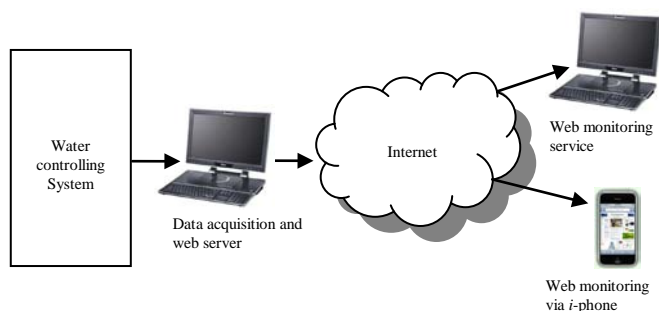


Figure 3: Water level monitoring network

A. Data communication

- 1) Step1: Data acquisition from water level sensors (WLS_i) where i equal to 1.....3.4.5. And WLS could be connected to a computer via wireless or USB cable.
- 2) Step2: Data should be taken in fixed time duration. Controlling server should get serialized data via external port.
- 3) Step3: Each of these bits represents different sensors activities. Data should be sent in the bit order.
- 4) Step4: Microcontroller should deliver data in datagram packet or data communication could be UDP and TCP. In addition, data should be formed with a particular time's instance.

B. Data acquisition and representation

- 1) Step1: Data acquisition server should bind the specific port that is assigned from data communication protocol.
- 2) Step2: Received Data should store in buffer and process stored data to represent in web based application.
- 3) Step3: Data should be transformed into XML format. Data could be sending from server via SOAP data passing protocol.
- 4) Step4: Data representation should be in graphical user interface for users viewing and therefore they should have secured access to control microcontroller. In case of water level indication, notification message could be included in XML file.
- 5) Step5: Data sending method should maintain Interface serializability. Moreover, PC server should support multi client and store acquired data in buffer that user can access database and control microcontroller. In addition, user authorization should be included in this section for security perspective.

C. Remote communication

- 1) Step1: Design interactive application software for remote PC or mobile should display data in table format or in the graphical interface for integration of the wireless water level monitoring.
- 2) Step2: Display the available local connections and the stored remote connections through the internet. Moreover, Display different data of wireless automated controlling system by different sort (sensors/actuators in one node, all devices in a room, all devices in an apartment/factory).
- 3) Step3: Display the whole network structure for the maintenance user.

VI. CONCLUSION

Water is one of the most important basic needs for all living beings. But unfortunately a huge amount of water is being wasted by uncontrolled use. Some other automated water level monitoring system is also offered so far but most of the method has some shortness in practice. We tried to overcome these problems and implemented an efficient automated water level monitoring and controlling system. Our intension of this research work was to establish a flexible, economical and easy configurable system which can solve our water losing problem. We have been used a low cost PIC 16F84A microcontroller in this system which is the key point to reduce

cost. We have successfully experiment the system in lab and therefore proposed a web based water level monitoring and controlling network which flexibility would offer us to control this system from any place via internet even with different type of devices. This could have a substantial benefit from this research work for efficient management of water.

REFERENCES

- [1] Microcontroller chip Technology, 2001, PIC16F84A Datasheet www.microchip.com
- [2] P. Dietz, W. Yerazunis, D. Leigh, Very Low-Cost Sensing and Communication Using Bidirectional LEDs, UbiComp 2003: Proceedings, vol. 2864, pp. 175-191, 2003.
- [3] M. Javanmard, K.A. Abbas and F. Arvin, "A Microcontroller-Based Monitoring System for Batch Tea Dryer", CCSE Journal of Agricultural Science, Vol. 1, No. 2, December 2009
- [4] Roderick L. Shepherd, William S. Yerazunis and Senior Member, "Low-Cost Surface Mount LED Gas Sensor", IEEE King Tong Lau and Dermot Diamond, Sensors-00997, 2005
- [5] T. S. Aye, and Z M. Lwin, "Microcontroller Based Electric Expansion Valve Controller for Air Conditioning System", World Academy of Science, Engineering and Technology, 2008
- [6] L. Byrne, K.T. Lau, and D. Diamond, Monitoring of headspace total volatile basic nitrogen from selected fish species using reflectance spectroscopic measurements of pH sensitive films, The Analyst, vol. 127, pp. 1338-1341, 2002.
- [7] Milenkovic, A., Milenkovic, M., Jovanov, E., Hite, D., and Raskovic, D.: An environment for runtime power monitoring of wireless sensor network platforms, Proc. of SSST' 05, 406-410, 2005.
- [8] E.J. Cho and F.V. Bright, Integrated chemical sensor array platform based on light emitting diode, xerogel-derived sensor elements, and high-speed pin printing, Analytica Chimica Acta, vol. 470, pp. 101-110, 2002.
- [9] R.E. Shaffer, S.L. Rose-Pehrsson, R.A. McGill, A comparison study of chemical sensor array pattern recognition algorithms, Anal. Chim. Acta 384 (1999) 305-317.